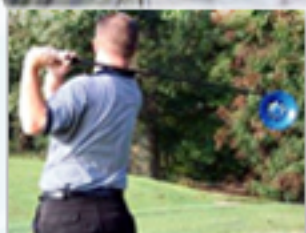




BUILDS STRENGTH AND ADDS DISTANCE TO ALL YOUR SHOTS!



What QuickFix Will Do For You!

Adds power to your golf swing by increasing strength and clubhead speed. The faster you swing, the greater the resistance and muscle-building results.

Strengthens the specific muscles that power your golf swing—hands, wrists, arms, back, shoulders and legs adding distance, control, consistency and increased accuracy off the tee.

Increase your ability to transfer your weight properly from right to left during your golf swing. Promotes a complete follow-through.

Helps avoid injury by providing a proper warm-up.

QuickFix weighs the same as your current driver to enable you to make a full swing without the risk of injury that can result from swinging a weighted club.

Helps lower your scores and adds more enjoyment to your game.

Larry Nelson, U.S. Open and two time PGA Champion

"A few years ago, I felt I was losing power and strength in my golf swing. I did not have the time to hit the thousands of balls necessary to regain my golf strength. I decided to design an exercise club that would use air resistance to build muscle strength. The result is the QuickFix, the first exercise club designed to increase golf specific muscle groups."

QuickFix uses wind resistance and benefits golfers of all swing speeds. The percent of resistance is the same for a player with a swing speed of 70 mph as well as a top tour player with a swing speed of 125 mph. With continual use of the QuickFix, every golfer will increase his or her strength and distance for as long as they play the game.

CALL TOLL FREE AT
1-877-286-7074
OR VISIT US AT

Order QuickFix Today:
\$99.95 msrp \$129.95